



# The WHOLE Solution

## InnoGain GM

### Description:

InnoGain GM Gainmaker provides a cost effective, efficient and sustainable alternative for creating spiral profiled recesses in pre-cast and in-situ concrete. Replacing traditional techniques of using threaded starter bar anchors, InnoGain GM precision forms holes in which a standard reinforcement bar can be installed.

The InnoGain GM can be attached to the formwork within one minute and does not require any further support.

The InnoGain GM is reusable which makes it ideal for applications where holes need to be created accurately and on scale.

Using the InnoGain method of hole forming means there is no interruption in the reinforcement bar which makes it suitable for static and dynamic loads.

Also no slip due to the absence of coupling system which the starter bar anchors has.

The solution for bent reinforcement bars or U profiled bars. It appears that curved threaded starter bar anchors cannot be mounted slipfree.

From a safety point the InnoGain can be used in floor fields, keeping them free from protruding reinforcement bars to prevent personal injury.

### System:

The InnoGain GM is based on a unique interplay between a rigid inner core and the flexible profiled outer cover.

The flexible outer cover of the GM Gainmaker will undergo a diameter reduction during manual removal. After removal, the flexible outer part returns to its original shape.

The special composition of the rubber of the InnoGain GM prevents the adhesion of concrete residues. This allows them to be used again immediately.



### Benefits:

- Significant material and labor saving.
- Reusable with minimal maintenance.
- Most durable rebar coupling system.
- For dynamic and static loads.
- Residual rebar steel can be used.
- No interruption of the reinforcing steel.
- Ideal for bent rebar steel like U-profiles.
- Easy in use.
- Mounted within 1 minute.
- No specialist tools required.
- Saving logistics and transport costs.
- 100% recyclable.



## Ankertec BV

Voorbancken 12a  
3645 GV Vinkeveen

+31 (0)297-263206

[info@rcm-ankertec.nl](mailto:info@rcm-ankertec.nl)

[www.InnoGain.com](http://www.InnoGain.com)



## InnoGain GM

### Specifications:

#### InnoGain GM-Gainmaker

Article	Description	Size (mm)	Weight (KG)
I122026	GM	Ø28x260	0.36
I122040	GM	Ø28x400	0.46
I122050	GM	Ø28x500	0.53
I122060	GM	Ø28x600	0.60
I124030	GM	Ø43x300	0.69
I124040	GM	Ø43x400	0.86
I124050	GM	Ø43x500	1.03
I124060	GM	Ø43x600	1.20
I124070	GM	Ø43x700	1.37
I124080	GM	Ø43x800	1.54
I124100	GM	Ø43x1000	1.88
I125040	GM	Ø53x400	1.00
I125050	GM	Ø53x500	1.30
I125060	GM	Ø53x600	1.60
I125070	GM	Ø53x700	2.20
I125080	GM	Ø53x800	2.50
I125090	GM	Ø53x900	2.80
I125100	GM	Ø53x1000	3.10
I126050	GM	Ø63x500	2.30
I126060	GM	Ø63x600	2.60
I126070	GM	Ø63x700	3.00
I126080	GM	Ø63x800	3.40
I126090	GM	Ø63x900	3.80



### Accessories:

#### InnoGain wing-bolt / Pull out key

Article	Description	Size (mm)	Weight (KG)
I190001	VB-Wing-bolt	KO10x200	0.20
I191001	US-Pull out key	KO10	0.20

#### InnoWax

Article	Description	Size (mm)	Weight (KG)
I098025	InnoWax	1 ltr	0.90
I098030	InnoWax	5 ltr	4.50





## Ankertec BV

Voorbancken 12a  
3645 GV Vinkeveen

**+31 (0)297-263206**  
[info@rcm-ankertec.nl](mailto:info@rcm-ankertec.nl)  
[www.InnoGain.com](http://www.InnoGain.com)

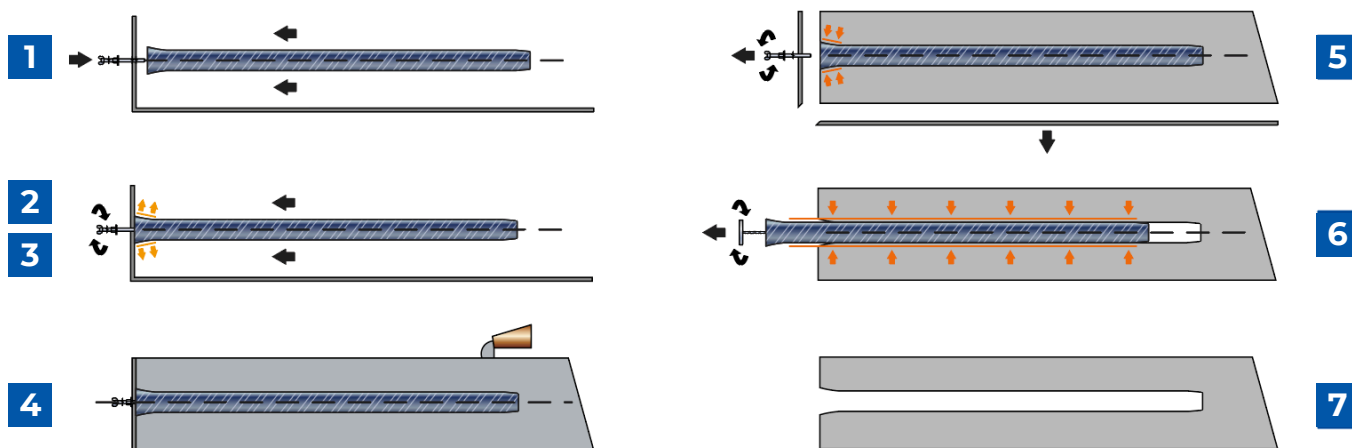


# InnoGain GM

## Installation guide:



- 1** The Innogain GM is attached firmly with its fixing bolt through the formwork. Turn the wing-bolt by hand in to the steel inner core of the InnoGain GM gainmaker.
- 2** The bolt should be hand tightened with a spanner until a positive connection is made with the inset metal plate. Holding the wing-bolt firmly to prevent the steel inner core turning in the flexible outer part, turn the nut with a tool so that the inside steel core is firmly fixed to the formwork.  
During securing the tapered end section closes tightly against the formwork and prevents any ingress of concrete which is important to aid the removal of InnoGain.
- 3** Check by hand the InnoGain GM is securely fixed on the formwork - no further support is required.
- 4** Casting the concrete.
- 5** Remove the formwork, if correctly installed, tension within the InnoGain will ensure that the head protrudes from the concrete.
- 6** The special release key should be screwed into the InnoGain GM. The key has two flat spots that prevent a vacuum forming which allows for easy removal. With the release key attached firmly pull the GM straight from the concrete. If the release key has not been correctly engaged the Innogain will releases heavier.
- 7** The result is a clean, dust free, profiled InnoGain hole.



## Instruction movie:

<https://innogain.nl/producten/innogain-gm/>



## Ankertec BV

Voorbancken 12a  
3645 GV Vinkeveen

**+31 (0)297-263206**  
[info@rcm-ankertec.nl](mailto:info@rcm-ankertec.nl)  
[www.InnoGain.com](http://www.InnoGain.com)

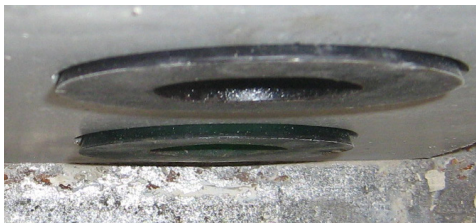
IMPORTANT: Directions for use are given for guidance only and are not intended to form part of any contract. They should be varied or adapted to suit your particular materials or conditions of use. Goods supplied by the company are made to approved standards from the highest quality raw materials but no warranty or guarantee is given as to their suitability for any particular purpose or application, and no liability is accepted for any loss or damage arising directly or indirectly from the use of the Company's products irrespective of any information given to us as to intended use of such products. It is therefore recommended that prospective users should test a sample of this product under their own conditions to satisfy themselves that the product is suitable for the purpose intended.



## InnoGain GM

### Important remarks:

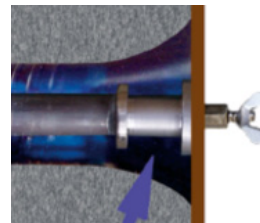
- If the concrete temperature is high then during removal of InnoGain products this can result in the head being left in the concrete after removal of the formwork. To prevent this from happening the head may be greased during the assembly in the formwork with InnoWax.
- Care should be taken to avoid sharp edges which may damage the flexible outer cover.
- InnoGain should only be used in concrete.
- Always ensure the InnoGain is pulled squarely from the concrete.
- After protracted use the InnoGain can get dry noticed by increasing pull resistance – an application of InnoWax can be used to restore the InnoGain.
- Use InnoGain GM in the formwork only in a horizontal position.



Unstressed head after formwork



Good fixed on the formwork



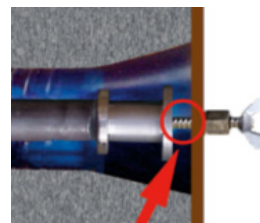
Good fixed on the formwork



Avoid sharp edges



Wrong fixed on the formwork



Wrong fixed on the formwork



Voorbancken 12a  
3645 GV Vinkeveen

+31 (0)297-263206

info@rcm-ankertec.nl

www.InnoGain.com

IMPORTANT: Directions for use are given for guidance only and are not intended to form part of any contract. They should be varied or adapted to suit your particular materials or conditions of use. Goods supplied by the company are made to approved standards from the highest quality raw materials but no warranty or guarantee is given as to their suitability for any particular purpose or application, and no liability is accepted for any loss or damage arising directly or indirectly from the use of the Company's products irrespective of any information given to us as to intended use of such products. It is therefore recommended that prospective users should test a sample of this product under their own conditions to satisfy themselves that the product is suitable for the purpose intended.